

**B 24 E / B 25 E**

**EN**

**INSTRUCTIONS  
HUMIDIFIER**



 **TROTEC**

**Table of contents**

**Information on the use of these instructions** ..... 2

**Safety** ..... 2

**Information about the device**..... 4

**Transport and storage**..... 5

**Assembly and installation**..... 6

**Operation** ..... 8

**Available accessories**..... 9

**Errors and faults**..... 9

**Maintenance** ..... 10

**Technical annex**..... 13

**Disposal** ..... 14

You can download the current version of the instructions and the EU declaration of conformity via the following link:



B 24 E



<https://hub.trotec.com/?id=42337>

B 25 E



<https://hub.trotec.com/?id=42339>

**Information on the use of these instructions**

**Symbols**

**Warning of electrical voltage**  
This symbol indicates dangers to the life and health of persons due to electrical voltage.

**Warning**  
This signal word indicates a hazard with an average risk level which, if not avoided, can result in serious injury or death.

**Caution**  
This signal word indicates a hazard with a low risk level which, if not avoided, can result in minor or moderate injury.

**Notice**  
This signal word indicates important information (e.g. material damage), but does not indicate hazards.

**Info**  
Information marked with this symbol helps you to carry out your tasks quickly and safely.

**Follow the manual**  
Information marked with this symbol indicates that the instructions must be observed.

**Safety**

**Read this manual carefully before starting or using the device. Always store the manual in the immediate vicinity of the device or its site of use.**

**Warning**  
**Read all safety warnings and all instructions.** Failure to follow the warnings and instructions may result in electric shock, fire and/or serious injury.  
**Save all warnings and instructions for future reference.**  
This appliance can be used by children aged from 8 years and above and persons with reduced physical, sensory or mental capabilities or lack of experience and knowledge if they have been given supervision or instruction concerning use of the appliance in a safe way and understand the hazards involved.  
Children shall not play with the appliance. Cleaning and user maintenance shall not be done by children without supervision.

- Do not use the device in potentially explosive rooms or areas and do not install it there.
- Do not use the device in an aggressive atmosphere.
- Place the device in an upright and stable position on horizontal and stable ground.
- Do not expose the device to directly squirting water.
- Fill the device with clear drinking water only.
- Do not cover the device during operation.
- Do not sit on the device.
- This appliance is not a toy. Keep away from children and animals.
- Check the device occasionally during operation.

- Ensure that all electric cables outside of the device are protected from damage (e.g. caused by animals). Never use the device if electric cables or the power connection are damaged!
- The mains connection must correspond to the specifications in the Technical annex.
- Insert the mains plug into a properly fused mains socket.
- Observe the device's power input, cable length and intended use when selecting extensions to the power cable. Completely unroll extension cables. Avoid electrical overload.
- Do not under any circumstances use the device if you detect damages on the mains plug or power cable. If the power cable is damaged, it must be replaced by the manufacturer, its service agent or similarly qualified persons in order to avoid a hazard. Defective power cables pose a serious health risk!
- Before carrying out maintenance, care or repair work on the device, remove the mains plug from the mains socket. Hold onto the mains plug while doing so.
- Switch the device off and disconnect the power cable from the mains socket when the device is not in use.
- Make sure that the air inlet and outlet are not obstructed.
- Make sure that the suction side is kept free of dirt and loose objects.
- Never insert any objects or limbs into the device.
- Do not remove any safety signs, stickers or labels from the device. Keep all safety signs, stickers and labels in legible condition.
- Do not use the device when the water tank is empty.
- Only transport the device in an upright position with an emptied water tank.
- Empty and clean the water tank prior to storage or transport. Do not drink the water. Health hazard!
- Never leave water in the water tank when the appliance is not in use.
- Make sure that objects in the surroundings of the device do not become wet or damp. If moisture is present, the output must be reduced. Set the device to a lower level. If the output cannot be reduced, the device must only be operated in intervals. If necessary, switch the device off completely for a short time. Ensure that absorbent materials such as carpeting, curtains, sheers or tablecloths will not become damp.
- Note that high humidity levels may enhance the growth of biological organisms in the environment.

- Make sure that the water in the water tank is replaced every 3 days. Otherwise there is a risk of microorganisms growing in the water tank which presents a health hazard if they get into the air or water.
- Only use original spare parts, for otherwise safe and functional operation cannot be ensured.
- Switch the device off and disconnect the power cable from the mains socket before cleaning the device or before filling the water tank with water.

### **Intended use**

Only use the device as a mobile humidifier for the humidification and filtration of room air, while adhering to and following the technical data.

Intended use comprises humidifying the room air in:

- living spaces
- warehouses and archives
- libraries
- call centres and computer rooms

Any use other than the intended use is regarded as misuse.

### **Reasonably foreseeable misuse**

- The device is not intended for industrial use.
- Do not place the device on wet or flooded ground.
- Do not place any objects, e.g. clothing, on the device.
- Do not use the device out of doors.
- Never immerse the device in water.
- Do not make any unauthorised modifications, alterations or structural changes to the device.

### **Personnel qualification**

People who use this device must:

- be aware of the dangers that occur when working with electric devices in damp areas.
- have read and understood the instructions, especially the Safety chapter.

## Residual risks



### Warning of electrical voltage

Work on the electrical components must only be carried out by an authorised specialist company!



### Warning of electrical voltage

Risk of electric shock!

The device is not protected against water.

There is a risk of electric shock!

Never use the device in areas where dripping, spraying or running water can enter the device! Never immerse the device in water!



### Warning of electrical voltage

Risk of electric shock!

Risk of an electric shock if the device comes into contact with water at certain points (e.g. control unit, electrical components)!



### Warning of electrical voltage

Before any work on the device, remove the mains plug from the mains socket!

Do not touch the mains plug with wet or damp hands. Hold onto the mains plug while pulling the power cable out of the mains socket.



### Warning

Dangers can occur at the device when it is used by untrained people in an unprofessional or improper way! Observe the personnel qualifications!



### Warning

The device is not a toy and does not belong in the hands of children.



### Warning

Risk of suffocation!

Do not leave the packaging lying around. Children may use it as a dangerous toy.



### Caution

If the device is knocked over, water will leak from the lower part.

Disconnect the device from the mains to prevent damage to the device caused by dry running.

### Notice

Do not operate the device without an inserted evaporation filter!

Without evaporation filter, the inside of the device will be heavily contaminated. This could reduce the performance and result in damage to the device.

## Behaviour in the event of an emergency

1. Switch the device off.
2. Disconnect the device from the mains by removing the mains plug from the socket. When doing so, be sure to hold the plug, not the cable.
3. Do not reconnect a defective device to the mains.

## Information about the device

### Device description

The device functions as a humidifier, aroma diffuser and air cleaner.

The hygrostat-controlled room air humidification by natural cold evaporation ensures a pleasant room climate and air quality improvement.

The device is equipped with an integrated scented oil tank and diffuser for optional room air aromatization.

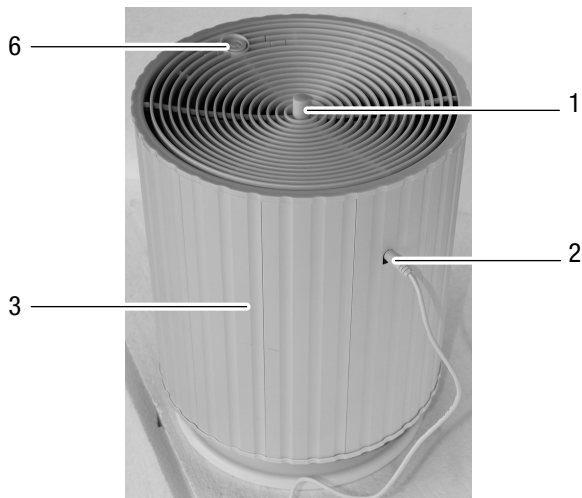
An evaporation filter with special honeycomb structure ensures an optimum humidity level of 40 % to 60 %. The filter further prevents lime and other air pollutants from being emitted to the room air.

The device comes with different operating modes as well as a night mode enabling ultra-silent operation at bedtime.

The device switches off automatically when the water tank is empty.

The functioning of the two devices B 24 E and B 25 E is identical, they merely differ in appearance or to be precise in colour: The device B 24 E is copper-coloured and the device B 25 E is white.

## Device depiction



No.	Designation
1	Attachment of air filter grid
2	Power cable
3	Upper part with electronic equipment and fan
4	Water tank with retainer for evaporation filter
5	Evaporation filter
6	Control unit

## Transport and storage

### Notice

If you store or transport the device improperly, the device may be damaged.  
Note the information regarding transport and storage of the device.

### Transport

**Before** transporting the device, observe the following:

- Switch the device off.
- Disconnect the device from the mains by removing the mains plug from the socket. When doing so, be sure to hold the plug, not the cable.
- Empty the water tank.
- Do not use the power cable to drag the device.
- Check whether the upper part is correctly positioned on the lower part.
- Lift the device at the lower part.

**After** transporting the device, proceed as follows:

- Set up the device in an upright position after transport.

### Storage

**Before** storing the device, proceed as follows:

- Disconnect the device from the mains by removing the mains plug from the socket. When doing so, be sure to hold the plug, not the cable.
- Empty and clean the water tank prior to storage (see chapter Maintenance).
- Use a cloth to wipe all parts of the device dry.

When the device is not being used, observe the following storage conditions:

- Store the device in a dry location and protected from frost and heat.
- Store the device in an upright position where it is protected from dust and direct sunlight.
- If required, use a cover to protect the device from invasive dust.
- Place no further devices or objects on top of the device to prevent it from being damaged.

## Assembly and installation

### Scope of delivery

- 1 x Device
- 1 x Adapter
- 1 x Evaporation filter
- 1 x Manual

### Unpacking the device

1. Open the cardboard box and take the device out.
2. Completely remove the packaging.
3. Fully unwind the power cable. Make sure that the power cable is not damaged and that you do not damage it during unwinding.

### Start-up

- Before restarting the device, check the condition of the power cable. If there are doubts as to the sound condition, contact the customer service.
- Place the device in an upright and stable position on horizontal and stable ground.
- Do not create tripping hazards when laying the power cable or other electric cables, especially when positioning the device in the middle of the room. Use cable bridges.
- Make sure that extension cables are completely unrolled.
- Do not set up the humidifier next to furniture, paintings and other devices which can be damaged by humidity.

Observe the following before operating the device after a period of non-use or after the device has been stored:

- Clean the housing and the water tank prior to recommissioning (see chapter Maintenance).

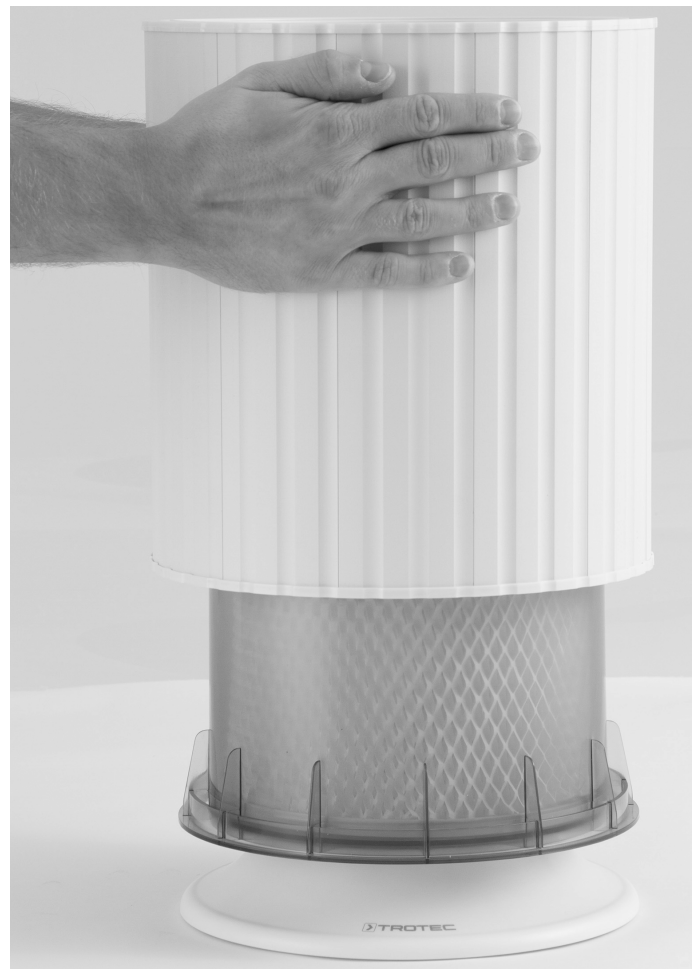
### Filling the water tank



#### Info

If possible, change the water every 3 days to prevent bacterial growth.

- ✓ The device is switched off and the power cable is disconnected from the mains.
1. Remove the upper part from the water tank and put it aside.



2. Fill the water tank with fresh drinking water.
  - ⇒ Stop approx. 5 cm below the edge of the water tank.
  - ⇒ The evaporation filter may get wet.
3. Place the upper part correctly onto the water tank.
  - ⇒ The electronic equipment and the fan in the upper part must not get wet.
4. When setting up the device, ensure a sufficient distance to walls and other objects. The air inlet and outlet must not be obstructed or covered, e.g. by curtains.
5. Plug the mains plug into a sufficiently fused socket.
  - ⇒ The device is ready for operation.

### Scent option

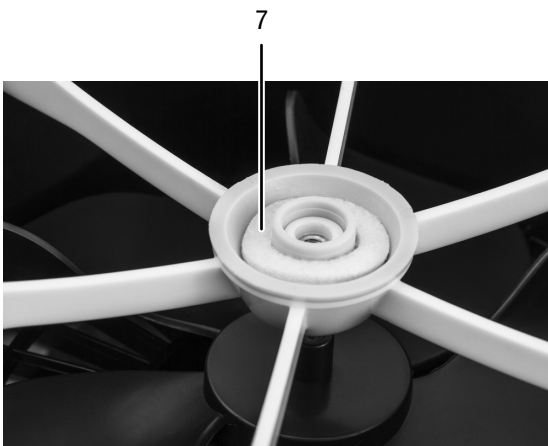
Additionally, the device offers the possibility to distribute a scent during operation.

Use standard scented oil. Proceed as follows to use the scent option:

- ✓ The device is switched off and the power cable is disconnected from the mains.
- 1. Unscrew the attachment for the air grid (1) by turning counter-clockwise.



- 2. Remove the air grid.  
⇒ The scented oil reservoir is open.



- 3. Rinse the filter ring (7) under running water if you use different scented oils in succession.

- 4. Add a few drops of scented oil onto the filter ring (7) in the scented oil reservoir.

### Notice

Make sure that no scented oil drops onto the fan or the electronic equipment below as this may damage the device.



- 5. Put the air grid back on the device and fasten the attachment by turning clockwise.

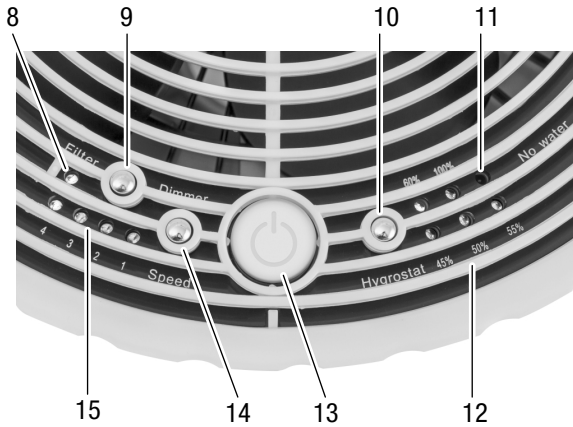
### Connecting the power adapter

- Plug the power adapter cable into the device's mains connection.
- Plug the power adapter into a properly fused mains socket.

**Operation**

- Avoid open doors and windows.

**Operating elements**



No.	Designation	Meaning
8	Filter LED	Filter change indication
9	Dimmer button	Dimming the LEDs
10	Hygrostat button	Selection button for the humidity level 45 %, 50 %, 55 %, 60 %, 100 % (continuous operation)
11	No water LED	Refill water tank indication
12	Humidity level LEDs	Indication of the set room humidity level
13	Power button	Switching the device on or off
14	Speed button	Setting the fan speed
15	Fan speed LEDs	Fan speed indication 1 Stage 1 = low (night mode) 2 Stage 2 = medium 3 Stage 3 = high 4 Stage 4 = maximum

**Switching the device on**

1. Make sure that the tank has been filled with water.
2. Make sure that the device is neither damp nor wet on the outside. Otherwise wipe it dry.
3. Press the *Power* button (13).  
⇒ The blue LEDs light up.

**Notice**

If the set humidity level is already present in the room, the blue *Humidity level* LED (12) will flash for approx. 5 seconds. Then motor and fan will switch off.

**Setting the fan stage**

1. Press the *Speed* button (14) until the LED (15) for the desired stage is illuminated.  
⇒ Stage 1: very quiet, during sleep or for night operation.  
⇒ Stage 2: quiet, for bedrooms or smaller rooms.  
⇒ Stage 3: for operation during the day in rooms of up to 25 m<sup>2</sup>.  
⇒ Stage 4: maximum speed, for fast humidification or very dry room air.

**Controlling humidification**

The desired room humidity can be set to 45 %, 50 %, 55 %, 60 % or 100 % (continuous operation – continuous humidification regardless of the humidity level in the room). The device automatically measures the room humidity level and stops humidification when the set level is reached. If this humidity level is fallen below again, the device restarts.

1. Press the *Hygrostat* button (10) to set the desired humidity level.  
⇒ The corresponding *Humidity level* LED (12) will be illuminated.

**Dimming the LEDs**

You can reduce the luminous intensity of the LEDs, e.g. if you want to operate the device in a bedroom at night. Adjust the luminous intensity as follows:

1. Press the *Dimmer* button (9) until the desired brightness level for the LEDs is set.  
⇒ You can choose between full and medium illumination, or switch the LEDs off.

**Shutdown**



**Warning of electrical voltage**

Do not touch the mains plug with wet or damp hands.

- Switch off the device by pressing the *Power* button (13).
- Disconnect the device from the mains by removing the mains plug from the socket. When doing so, be sure to hold the plug, not the cable.
- Empty the water tank.
- Use a cloth to wipe all parts of the device dry.
- Clean the device according to the Maintenance chapter.
- Store the device according to the Transport and storage chapter.

## Available accessories



### Warning

Only use accessories and additional equipment specified in the instructions.  
Using insertion tools or accessories other than those specified in the instructions may cause a risk of injury.

Designation	Article number
Evaporation filter B 24 E / B 25 E	7.710.000.832

## Errors and faults

The device has been checked for proper functioning several times during production. If malfunctions occur nonetheless, check the device according to the following list.

### Notice

Wait for at least 3 minutes after maintenance and repair work. Only then switch the device back on.

### The device does not start:

- Check the power connection.
- Check the power cable and mains plug for damage.
- Check the on-site fusing.
- Check whether the water tank indicator light is illuminated. The water tank might be empty and need refilling.
- Check the setting of the desired room humidity level. If it is below the current humidity level, the device will not start.

### The device runs, but there is no humidification:

- Check the fan for proper functioning or unusual vibrations and sounds. Remove external dirt.

### Water is leaking:

- Check whether the device is set up in a stable and upright position.
- Check the water level in the water tank. The water level might be too high and water is discharged via the overflow.
- Check the device for leaks.

### The device gives off an unpleasant odour:

- The device is new. Remove and rinse the water tank. Let the open water tank air for some hours.
- Check the water tank. There may be stale or dirty water in the water tank. Rinse the water tank and fill it with fresh drinking water.

### The device gets very warm, is loud or is losing performance:

- Check the air inlets and air grilles for dirt. Remove external dirt.
- Check the inside of the device for dirt (see chapter Maintenance). If necessary, clean the interior of the device using compressed air.

### The device is loud or vibrates heavily:

- Check whether the device is set up in a stable and upright position.

### The device still does not operate correctly after these checks:

Please contact the customer service. If necessary, bring the device to an authorised specialist electrical company or to the manufacturer for repair.

## Maintenance

## Maintenance intervals

Maintenance and care interval	before every start-up	as needed	every 3 days	at least every 2 weeks	at least every 4 weeks	at least every 6 months	at least annually
Check for damage	X						
Visually check the inside of the device for dirt		X					X
Check air inlets and outlets for dirt and foreign objects and clean if necessary	X				X		
Clean the exterior		X					X
Cleaning the water tank			X				
Check the valve unit for dirt and clean it, if necessary					X		X
Check the air filter for dirt and foreign objects and clean or replace if necessary	X			X			
Test run							X

## Maintenance and care log

Device type: .....

Device number: .....

Maintenance and care interval	1	2	3	4	5	6	7	8	9	10	11	12	13	14	15	16
Check for damage																
Visually check the inside of the device for dirt																
Check air inlets and outlets for dirt and foreign objects and clean if necessary																
Clean the exterior																
Cleaning the water tank																
Check the air filter for dirt and foreign objects and clean or replace if necessary																
Visually check the inside of the device for dirt																
Replace the air filter																
Check the attachment screws																
Test run																

1. Date: .....	2. Date: .....	3. Date: .....	4. Date: .....
Signature: .....	Signature: .....	Signature: .....	Signature: .....
5. Date: .....	6. Date: .....	7. Date: .....	8. Date: .....
Signature: .....	Signature: .....	Signature: .....	Signature: .....
9. Date: .....	10. Date: .....	11. Date: .....	12. Date: .....
Signature: .....	Signature: .....	Signature: .....	Signature: .....
13. Date: .....	14. Date: .....	15. Date: .....	16. Date: .....
Signature: .....	Signature: .....	Signature: .....	Signature: .....

## Activities required before starting maintenance



### Warning of electrical voltage

Do not touch the mains plug with wet or damp hands.

- Switch the device off.
- Disconnect the device from the mains by removing the mains plug from the socket. When doing so, be sure to hold the plug, not the cable.



### Warning of electrical voltage

Tasks which require the device to be opened must only be carried out by authorised specialist companies or by the manufacturer.

## Cleaning the housing

Clean the housing with a soft, damp and lint-free cloth. Make sure that no moisture enters the housing. Protect electrical components from moisture. Do not use any aggressive cleaning agents such as cleaning sprays, solvents, alcohol-based or abrasive cleaners to dampen the cloth.

## Cleaning the water tank



### Info

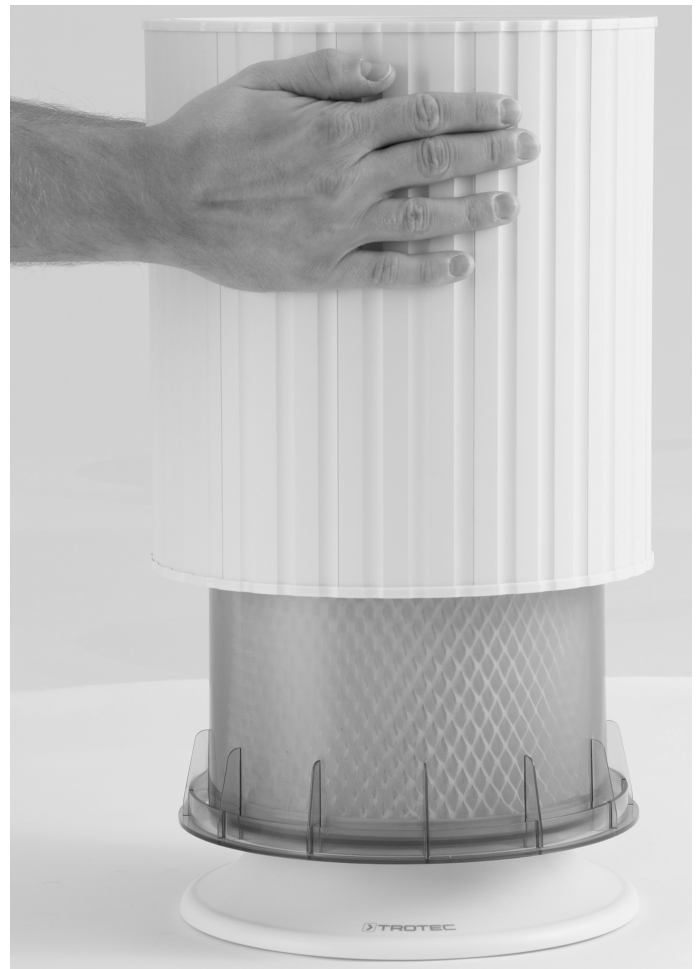
Clean the nebulizer membrane, air outlet, water tank and the water lines as often as possible.

The water tank should be cleaned every 3 days if actively used. Use household vinegar as cleaning/descaling agent. Observe the manufacturer's specifications and hazard warnings of the descaling agent.

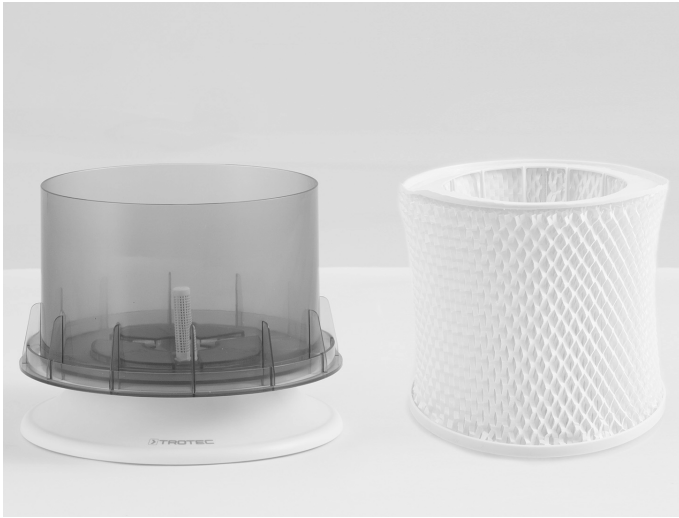
Empty and clean the water tank before a longer period of non-use or storage and prior to recommissioning (e.g. if the unit has been stored for several months and is dusty).

- ✓ The device is switched off and the power cable is disconnected from the mains.

1. Remove the upper part from the water tank and put it aside.



2. Take the evaporation filter out of the water tank.



3. Thoroughly rinse the water tank in a sink or similar.
4. Wipe the water tank dry.
5. Reinsert the evaporation filter into the water tank.



6. Fill the water tank with fresh drinking water if you want to continue operation.
  - ⇒ Stop approx. 5 cm below the edge of the water tank.
  - ⇒ The evaporation filter may get wet.
7. Place the upper part correctly onto the water tank.
  - ⇒ The electronic equipment and the fan in the upper part must not get wet.

### Replacing the evaporation filter

The *Filter LED (8)* is permanently illuminated in blue. After 800 operating hours, the LED starts flashing. Then replace the evaporation filter.

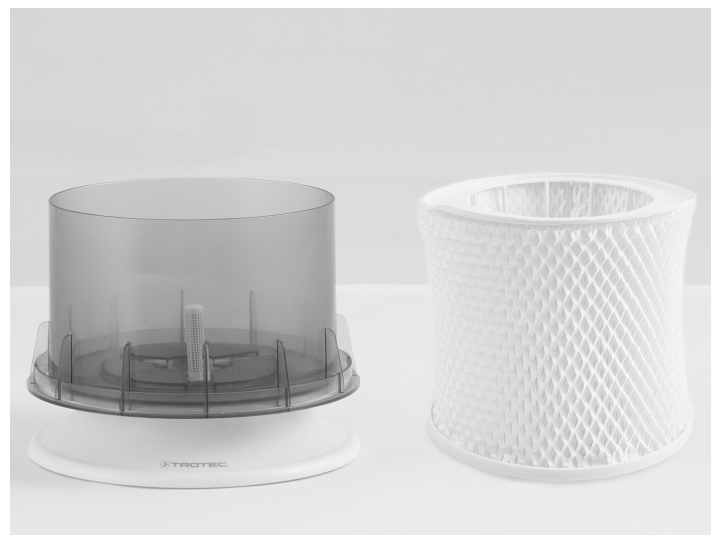
✓ The device is switched off and the power cable is disconnected from the mains.

✓ The *Filter LED (8)* flashes.

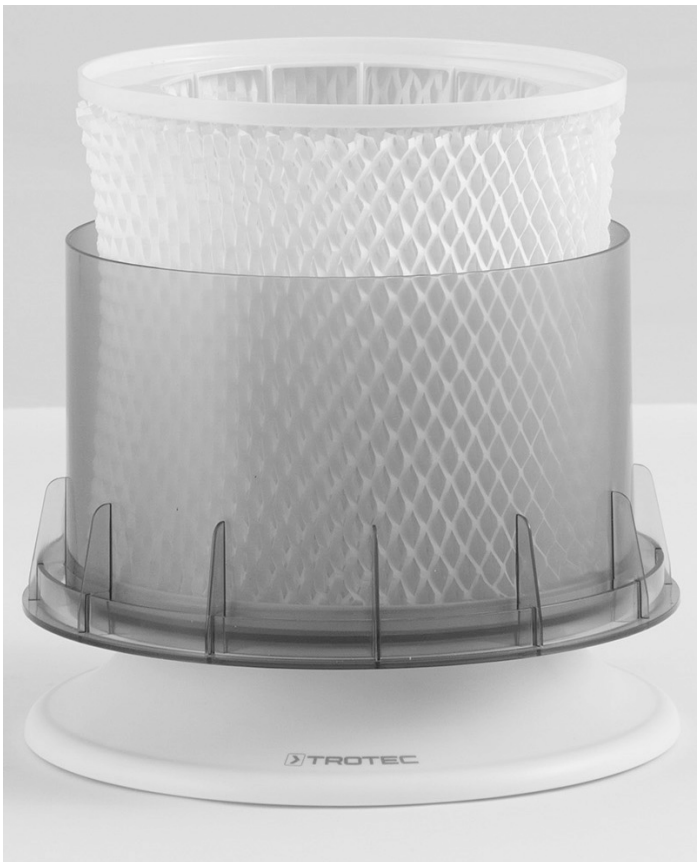
1. Remove the upper part from the water tank and put it aside.



2. Open the Velcro® fastener at the evaporation filter.
3. Remove the evaporation filter from the filter frame.



4. Dispose of the used evaporation filter according to the national regulations.
5. Attach the new evaporation filter on the filter frame and reinsert the evaporation filter.



## Technical annex

### Technical data

Parameter	Value
<b>Model</b>	<b>B 24 E / B 25 E</b>
Max. evaporation performance	8.4 l / 24 h
Runtime	8 h
Max. power consumption	6 W
Mains connection (adapter)	1/N ~ 240 V 50 Hz / 60 Hz
Output voltage of adapter	12 V
Output current of adapter	0.4 A
Nominal current consumption	0.2 A
Supply voltage	12 V
Type of protection	IP20
Sound pressure level (at a distance of 1 m)	58 dB(A)
Water tank capacity	3 l
Dimensions (width x height x length)	248 x 248 x 305 mm
Weight	2.5 kg

6. Place the upper part correctly onto the water tank.
  - ⇒ The electronic equipment and the fan in the upper part must not get wet.
7. Reconnect the device to the mains and switch it on.
8. Press the *Dimmer* button (9) for approx. 3 to 5 seconds to perform a filter reset.
  - ⇒ The *Filter* LED (8) stops flashing and is permanently illuminated again.

### Activities required after maintenance

If you want to continue using the device:

- Reconnect the device to the mains.

If you do not intend to use the device for a considerable time:

- Store the device according to the Transport and storage chapter.

## Disposal

Always dispose of packing materials in an environmentally friendly manner and in accordance with the applicable local disposal regulations.



The icon with the crossed-out wheeled bin indicates that this device and any associated components must not be disposed of with household waste at the end of their life, in accordance with the Waste Electrical and Electronic Equipment Directive (2012/19/EU) and national laws.

You will find collection points for free return of waste electrical and electronic equipment in your vicinity. The addresses can be obtained from your municipality or local administration. You can also find out about other return options that apply for many EU countries on the website <https://hub.trotec.com/?id=45090>. Otherwise, please contact an official recycling centre for electronic and electrical equipment authorised for your country.

The separate collection of waste electrical and electronic equipment aims to enable the re-use, recycling and other forms of recovery of waste equipment as well as to prevent negative effects for the environment and human health caused by the disposal of hazardous substances potentially contained in the equipment.

### Only for United Kingdom

According to Waste Electrical and Electronic Equipment Regulations 2013 (SI 2013/3113) (as amended) devices that are no longer usable must be collected separately and disposed of in an environmentally friendly manner.

Trotec GmbH

Grebener Str. 7  
D-52525 Heinsberg

📞 +49 2452 962-400

📠 +49 2452 962-200

✉ [info@trotec.com](mailto:info@trotec.com)

🌐 [www.trotec.com](http://www.trotec.com)